



Work Experience Pack

Prepared by LMP Architectural Consultants
www.lmparchitects.co.uk

1.0 Exercise 1 – Freehand Trace

In this exercise you will learn the basics of using a traditional drawing board, technical pens and the set square.

You will require the following materials & equipment;

- 'Exercise 1 – Freehand Trace' drawing
- Tracing paper
- Technical pen
- Set square

To commence, the 'Exercise 1 – Freehand Trace' drawing is to be placed and levelled on the drawing board using the straight edge. The drawing is then to be secured in place by tape with the tracing paper placed and taped above.

Using the technical pen the drawing is to be traced with straight lined created using the set square if you wish.

Once the trace is complete the drawing is to be copied onto paper using the large format printer & scanner to generate a finalised drawing.



Exercise complete

2.0 Exercise 2 – Technical Trace

In this exercise you will trace a technical drawing using the set square to create a precise and accurate drawing.

You will require the following materials and equipment;

- 'Exercise 2 – Technical Trace' drawing
- Tracing paper
- Technical pen
- Set square

To commence, the 'Exercise 2 – Technical Trace' drawing is to be placed and levelled on the drawing board using the straight edge. The drawing is then to be secured in place by tape with the tracing paper placed and taped above.

Using the technical pen and the set square you are to carefully and accurately trace the drawing to create a new technical drawing. Any notes and titles on the drawing are also to be copied to complete the drawing.



Exercise complete

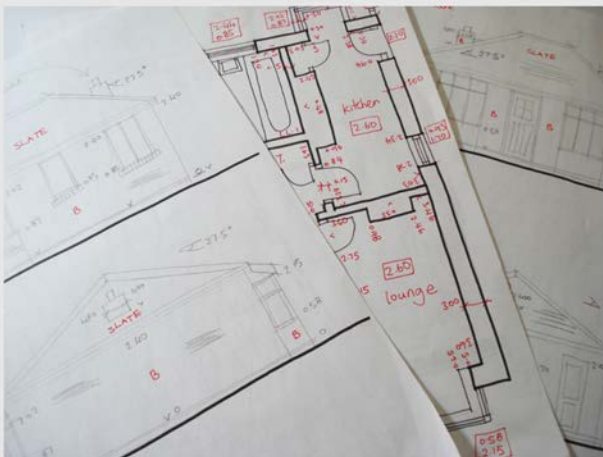
3.0 Exercise 3 – Drawing a Survey

In this exercise you will be introduced to surveying (drawing an existing building) and AutoCAD drawing software.

You will require the following materials and equipment;

- 'Exercise 3 – Drawing a Survey' notes
- Computer with AutoCAD software installed

Using the 'Exercise 3 – Drawing a Survey' notes, and following a basic tutorial in AutoCAD, the floor plans and elevations of the existing building are to be drawn alongside all relevant notes and titles. The drawing is to be finalised with a drawing sheet and completed title block. An example AutoCAD file will be provided for support.



Exercise complete

4.0 Exercise 4 – Sketch Proposals

With the requirements of the clients provided, you are to produce sketch proposals for an extension to the existing dwelling that you had drawn in the previous exercise.

You will require the following materials and equipment;

- Tracing paper
- Technical pencil
- Technical pen
- Set square

The proposals are to be drawn to scale on tracing paper (using the printed survey as an underlay) with multiple ideas and sketches created for the clients' consideration.

The drawing is to be finalised with a drawing sheet and completed title block. All appropriate notes and titles are to be included to complete the drawing.



Exercise complete

5.0 Exercise 5 – Finalised Proposal

With the sketch proposals refined, the preferred proposals are to be produced in AutoCAD to a planning drawing standard.

You will require the following materials and equipment;

- 'Exercise 4 – Sketch Proposals' drawings
- Computer with AutoCAD software installed

The drawing is to be finalised with a drawing sheet and completed title block. All appropriate notes and titles are to be included to complete the drawing.



Exercise complete ☐

6.0 Exercise 6 – 3D Model

In this exercise you will be introduced to 3D modelling. Following a basic tutorial, the finalised proposals completed in the previous exercise are to be modelled in Sketchup.

You will require the following materials and equipment;

- 'Exercise 5 – Finalised Proposal' drawing
- Computer with Sketchup & AutoCAD software installed

Only the external façades of the building are to be modelled to produce images that will allow the client to visualise the completed design.



Exercise complete